

Columbia Gardens Plots 9, 10, 11 & 12



A development of two and three bedroom homes



Ground 9 & 12

Lounge/Dining (irregular shape)

17'4" x 11'8" (5.3m x 3.6m)

Kitchen

10'5" x 6'6" (3.2m x 2.0m)

Ground 10 & 11

Lounge/Dining

12'5" x 14'1" (3.8m x 4.3m)

Kitchen

10'5" x 7'6" (3.2m x 2.3m)

First 9 & 12

Bedroom 1

9'5" x 11'8" (2.9m x 3.6m)

Bedroom 2

7'9" x 11'2" (2.4m x 3.4m)

Bedroom 3

6'9" x 6'2" (2.1m x 1.9m)

Bathroom

7'2" x 5'3" (2.2m x 1.6m)

First 10 & 11

Bedroom 1

9'5" x 11'8" (2.9m x 3.6m)

Bedroom 2

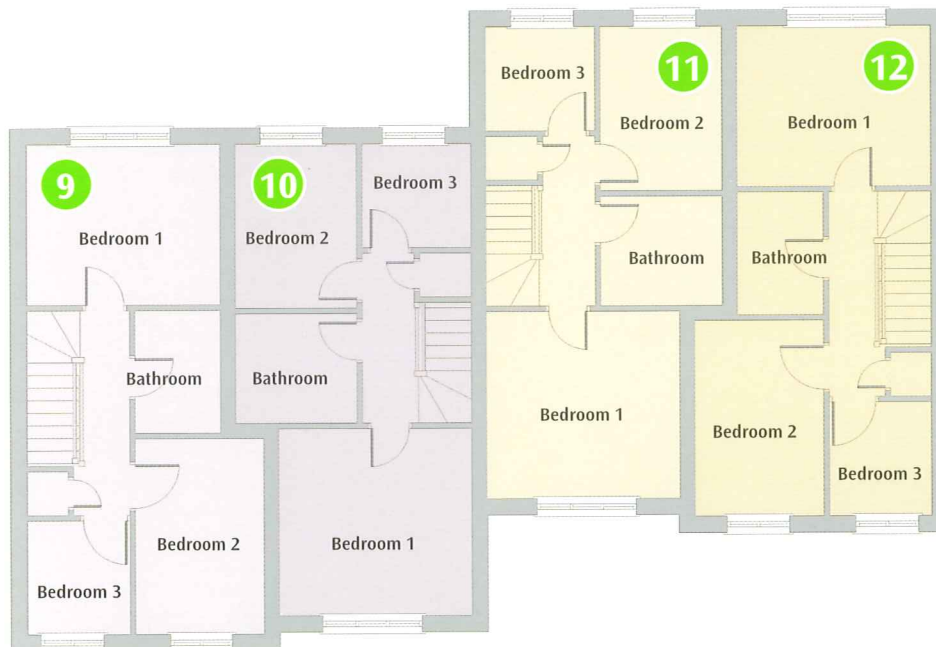
7'9" x 11'2" (2.4m x 3.4m)

Bedroom 3

6'9" x 6'2" (2.1m x 1.9m)

Bathroom

7'2" x 6'6" (2.2m x 2.0m)



Matthews Developments Ltd.

Stour House, 68 Grove Road, Wimborne, Dorset BH21 1BW

t 01202 849279 e info@matthewsdevelopments.co.uk

w www.matthewsdevelopments.co.uk

For clarification we wish to inform prospective purchasers that we have prepared these sales particulars as a general guide. Room sizes should not be relied upon for carpets and furnishings.

Matthews Developments Limited reserve the right to amend the specification without prior notice.

