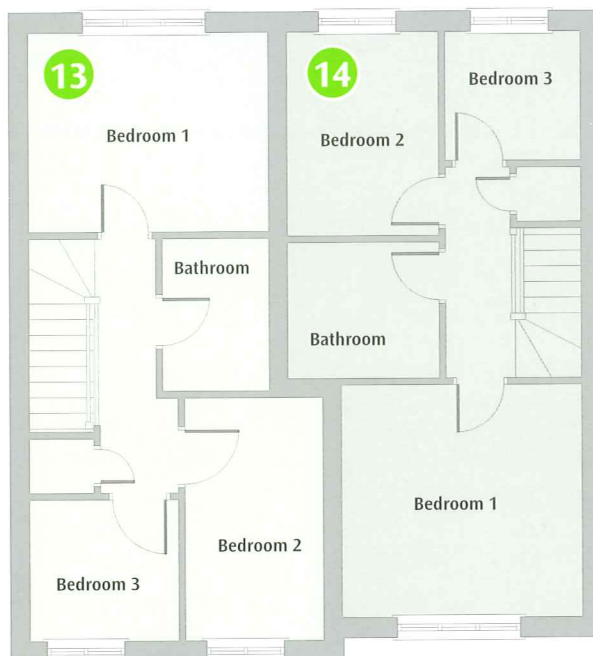
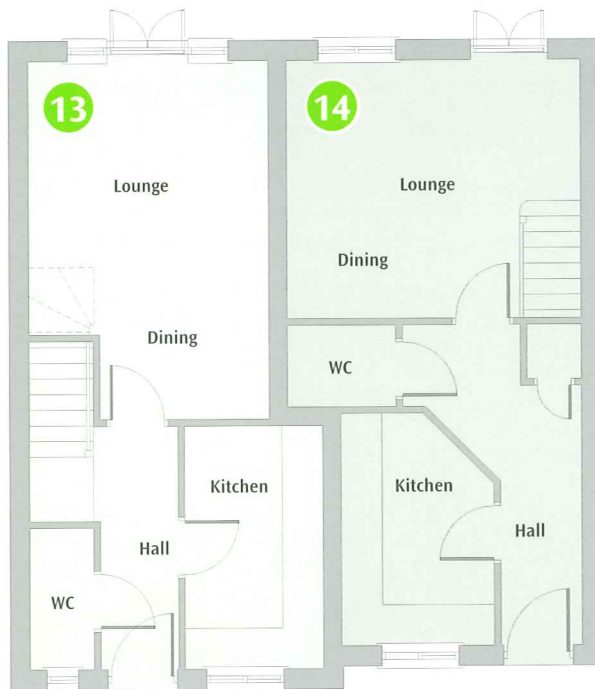


# Columbia Gardens Plots 13 & 14



A development of two and three bedroom homes



## Ground

**Lounge/Dining (irregular shape)**  
17'4" x 11'8" (5.3m x 3.6m)

**Kitchen**  
10'5" x 6'6" (3.2m x 2.0m)

## First 13

**Bedroom 1**  
11'5" x 11'2" (3.5m x 3.4m)

**Bedroom 2**  
7'2" x 9'5" (2.2m x 2.9m)

**Bedroom 3**  
6'2" x 6'6" (1.9m x 2.0m)

**Bathroom**  
7'2" x 5'3" (2.2m x 1.6m)

## First 14

**Bedroom 1**  
11'5" x 11'2" (3.5m x 3.4m)

**Bedroom 2**  
7'2" x 9'5" (2.2m x 2.9m)

**Bedroom 3**  
6'2" x 6'6" (1.9m x 2.0m)

**Bathroom**  
7'2" x 6'6" (2.2m x 2.0m)

### Matthews Developments Ltd.

Stour House, 68 Grove Road, Wimborne, Dorset BH21 1BW

t 01202 849279 e [info@matthewsdevelopments.co.uk](mailto:info@matthewsdevelopments.co.uk)

w [www.matthewsdevelopments.co.uk](http://www.matthewsdevelopments.co.uk)

For clarification we wish to inform prospective purchasers that we have prepared these sales particulars as a general guide. Room sizes should not be relied upon for carpets and furnishings.

Matthews Developments Limited reserve the right to amend the specification without prior notice.

**Matthews**  
DEVELOPMENTS