



Abbotsbury Close

Holland Park, W14

Abbotsbury Close £1,600,000

Holland Park, W14

This two bedroom town house is located in Abbotsbury Close, a quiet, well-kept development of modern houses, a short stroll to Holland Park.

The property comprises a reception room on the first floor opening to a balcony, and a spacious kitchen breakfast room with an open outlook over gardens. To the upper floor there are two double bedrooms both with fitted wardrobes and a family bathroom. There is a separate WC on the ground floor. There is also access to a large flat roof area from the second floor with wonderful far reaching views across London and Holland Park, there is also a garage and off street parking. The property is Freehold.





Price: £1,600,000

Tenure: Freehold

Local Authority: Royal Borough of Kensington and Chelsea

Abbotsbury Close

Holland Park, W14

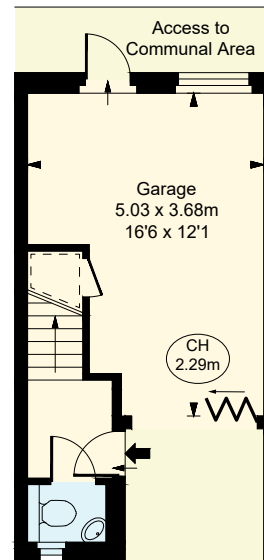
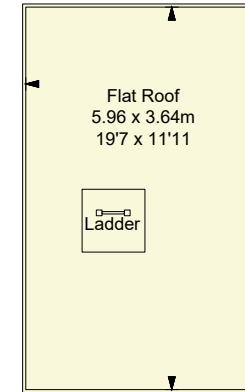
Floor area: 889 Sq. Ft / 82.55 Sq. M
Approximate gross internal area

EPC rating - E

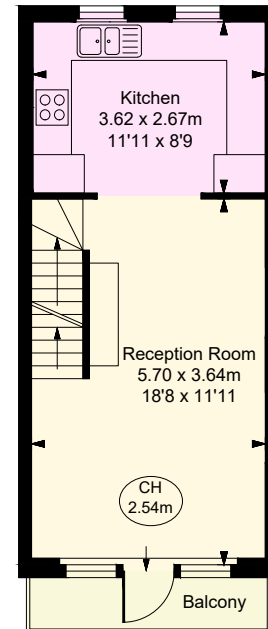
Price: £1,600,000
Tenure: Freehold
Council Tax Band: G - £2,514.97
Local Authority: Royal Borough of Kensington and Chelsea

Important Notice
In accordance with the Property Misdescriptions Act (1991) we have prepared these sales particulars as a general guide to give a broad description of the property. They are not intended to constitute part of an offer or contract. We have not carried out a structural survey and the services, appliances and specific fittings have not been tested. All photographs, measurements, floorplans and distances referred to are given as a guide only and should not be relied upon for the purchase of carpets or any other fixtures or fittings. Lease details, service charges and ground rent (where applicable) are given as a guide only and should be checked and confirmed by your solicitor prior to exchange of contracts.

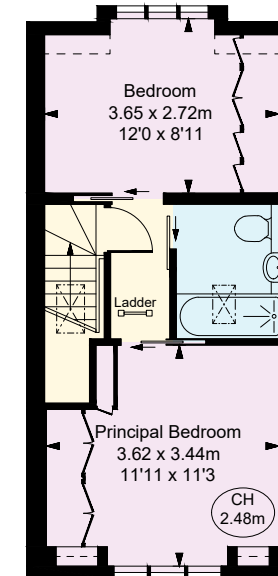
(Including restricted height
under 1.5m (— — — — —)
(CH = Ceiling Heights)



Ground Floor
Approximate Gross Internal Area
21.12 sq m / 227 sq ft



First Floor
Approximate Gross Internal Area
30.71 sq m / 331 sq ft



Second Floor
Approximate Gross Internal Area
30.72 sq m / 331 sq ft



Caroline Nicholas
Property Expert

+44(0)20 7908 9280 • www.youhome.co.uk • ldn@youhome.co.uk

First Floor, 121 Notting Hill Gate, Notting Hill, London, W11 3LB

youhome
PROPERTY EXPERTS